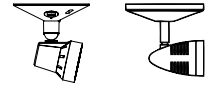
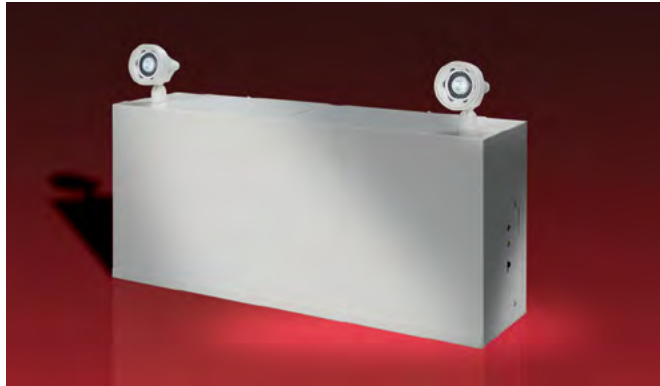


## S12E & S24E Series

Steel housing 12V up to 400W & 24V-400W capacities Lead-Calcium battery



**Available Head Style Choices:** ELF3 DR130  
**Head Style Suffix:** /ELF3 /DR130

BATTERY UNITS

### Housing

- Steel housing
- Standard mist white finish, optional black finish
- Choice of 12 or 24 volt MR16 LED lamp wattages
- Heads available in Thermoplastic or decorative die-cast aluminum

### Mounting

- Wall Mount
- Universal J-Box mounting

### Electronics

- Pulse plus charger
- Low voltage disconnect
- Automatic brownout protection
- Battery lock-out
- Fused output circuit
- Optional: Improved Diagnostics
- Optional: Nexus® monitoring system
- 120/277 60Hz

### Choice of Sealed Maintenance-Free Battery

6V or 12V Nickel-Cadmium battery

### Approvals

- UL 924 Standard
- New York City Approved

### Warranty (subject to proper installation and maintenance)

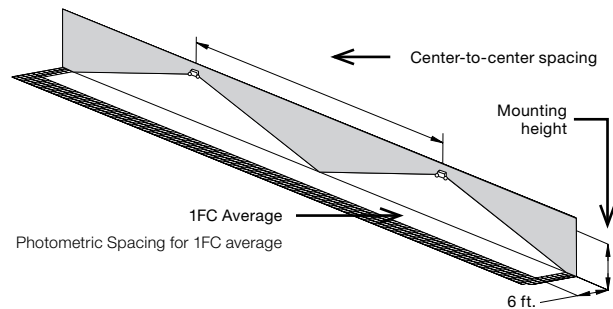
Unit: three-year full warranty

Detailed warranty terms located on [page 197](#) or online at: [www.lightalarms.com](http://www.lightalarms.com)

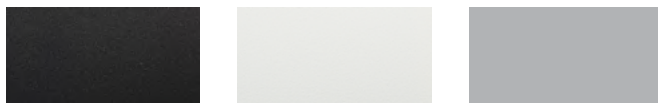


### Photometric performance

Lamp	Spacing center-to-center (feet)	
	7 feet mounting height	15 feet mounting height
LD7	55'	43'
LD9	71'	56'
LD10	100'	85'
LD13	56'	44'
LD14	106'	87'



### Housing color

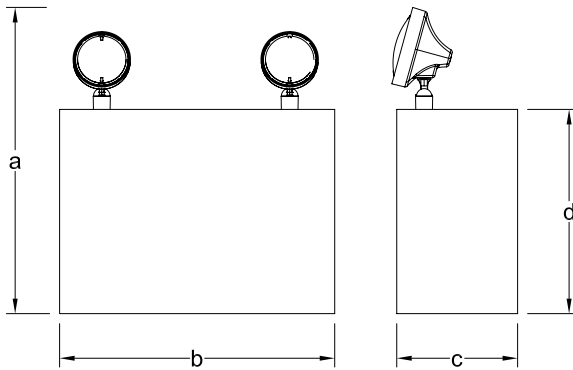


Black

Mist White

Gray

**Dimensions** (Dimensions are approximate and subject to change)



**Cabinet dimensions**

Cabinet	Dimensions			
	a	b	c	d
C	18-3/8" (46.67cm)	16-1/2" (41.91cm)	7-1/4" (18.41cm)	12-1/4" (32.38cm)
D	18-3/8" (46.67cm)	27" (68.58cm)	7-1/4" (18.41cm)	12-1/4" (32.38cm)

200W unit use C Cabinet dimensions  
300W and 400W unit use D Cabinet dimensions

**Power consumption chart**

Series	Battery	Voltage	DC Specs				Units dual voltage <sup>1</sup>	AC Specs Current Maximum
			Battery capacity (in watts)					
			90 Mins	2 Hrs	3 Hrs	4 Hrs		
S1245		12V	300	225	165	127		
S12E6	Lead-Calcium	12V	400	300	214	170		
S24E4		24V	400	300	120	60		

<sup>1</sup> All units 120/277 dual voltage, information based on wiring to specific voltage type

**Accessories** (Order as a separate item)

Description	Product code
Wire guard (S12E5/S12E6/S24E4)	WG4-L
Mounting platform (S12E4)	MP-A
Mounting platform (S12E5/S12E6/S24E4)	MD-12
Mounting bracket (S12E4/S24E4)	MB-A

**Ordering format**

Number of heads	Series/Capacity	Head style	Lamp type	Housing color	Options
0= No heads	<b>S12E5</b> = 12V-300W	<b>/ELF3</b> = ELF3	<b>LD7</b> = 12V-4W MR16 LED	<b>-G</b> = Gray	<b>Blank</b> = No Options
2= Two heads	<b>S12E6</b> = 12V-400W	(MR16, Plastic)	<b>LD9</b> = 12V-5W MR16 LED	<b>-M</b> = Mist white	<b>-ID</b> = Improved Diagnostics (audible) <sup>1,2</sup>
3= Three Heads	<b>S24E4</b> = 24V-400W	<b>/DR130</b> = DR130 (MR16, Metal)	<b>LD10</b> = 12V-6W MR16 LED <b>LD13</b> = 24V-4W MR16 LED <b>LD14</b> = 24V-6W MR16 LED	<b>-B</b> = Black	<b>-IDNA</b> = Improved Diagnostics (non audible) <sup>1,2</sup> <b>-NEX</b> = Nexus® Wired (contact your sales representative) <sup>2</sup> <b>-NEXRF</b> = Nexus® Wireless (contact your sales representative) <sup>2</sup> <b>-T3</b> = Time delay (15 minute) <sup>3</sup> <b>-DS</b> = Lamp disconnect switch <b>-VS</b> = Vandal-resistant screws <b>-3CP</b> = 120V Cord & plug, 3 wire, 3ft long <sup>4</sup>

**Example: 2S12E4/ELF3LD7-G**

<sup>1</sup> -ID & -IDNA include a time delay feature that can be enabled/disabled in the field or set by the factory by including -ID-TD\* or -IDNA-TD\*

<sup>2</sup> Minimum lamp load required: 20% of unit capacity

<sup>3</sup> Time delay only available with ID, IDNA, NEX or NEXRF models

<sup>4</sup> -3CP custom length available. Consult your sales representative