



CH LED SERIES

Die-Cast Aluminum Universal Trim White LED Edge-Lit Exit
or Stairs Signage Recessed or Surface, Ceiling, Wall or End Mounting

FEATURES

Construction

- Face Plate: Virgin acrylic face plate is thin, silk-screened to provide a flawless legend. Face plates are available with red letters on a white background
- Housing: Die-Cast aluminum back box, trim ring, trim plate and canopy
- U-shaped clear acrylic Legend panel features laser-etched letters and chevrons

Mounting

- All mounting configurations use the same basic components. Inserting a trim ring allows for recessed mounting on walls or ceilings. Applying a canopy allows for surface mounting on ceilings or walls as back or end mount.

Finishes

- Standard finish is brushed aluminum with other finishes available as an option

Chevrons

- Silk Screened as specified

LEDS

- White LED light source, 10-year life expectancy

Self-Diagnostics

- Self-Powered models available with or without Improved Diagnostics

Special Wording Panels

- Available. Contact your sales representative with your design requirements

Approvals

- Listed to UL 924 Standards
- City of Chicago Approved

Warranty

- Five Year full warranty (subject to proper installation and maintenance)

Detailed warranty terms located at: www.lightalarms.com

ACCESSORIES

(Order as a separate item)

Pendant, White	PW-*
Pendant, Black	PB-*
Pendant, Gray	PA-*

* Specify pendant length (12", 24", 36", etc).

BACKBOX

(Order as a separate item)

Backbox kit white	BBKTS-WT-L
Backbox kit black	BBKTS-BK-L
Backbox kit brushed aluminum	BBKTS-BA-L
Backbox kit chrome	BBKTS-CH-L
Backbox kit dark bronze	BBKTS-DB-L
Backbox kit polished brass	BBKTS-PB-L

SPECIFICATIONS

Supply and Install **Lightalarms® CH LED Series** CHSLD, CHSLDC, CHSLDD, CHSPLD, CHSPLDD Series.

The Exit or Stairs Sign specified with (D) dome or (P) pyramid trim plate, single face shall be standard with (1) legend panel, (1) housing, (1) trim ring, (1) trim plate, (1) canopy and 27 inch adjustable bar hangers and specified as double face shall be standard with (1) legend panel (with EXIT or STAIRS silk screened on each side), (1) housing, (1) trim ring, (1) trim plate, (1) canopy and 27 inch adjustable bar hangers.

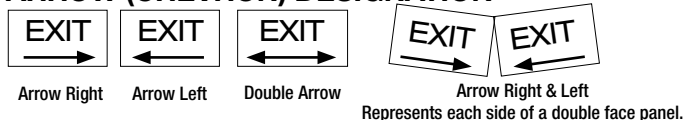
The Exit or Stairs Sign specified with (D) dome or (P) pyramid trim plate models housing, trim ring, trim plate and canopy shall be made of die-cast aluminum. Housing, trim ring, trim plate and canopy shall be in color, (W) white, (B) black or (A) brushed aluminum. Legend panel color shall be red on white.

The unit shall have the trim plate snap and lock in the housing with torsion spring retainers, thereby eliminating any visible screws or hardware. The legend panel shall be clear acrylic, U-shape and the letters and chevrons silk-screened as specified. The (D) dome or (P) pyramid trim plate model Exit or Stairs Sign shall be suitable for surface mount, wall, end or ceiling as well as recessed mount wall or ceiling applications. The illumination source shall be Light Emitting Diodes (LED) in white. The LEDs shall provide illumination in normal and emergency operation mode. The LEDs shall be mounted inside the Exit Sign housing on a PCB strip. A LED sensitive EXIT legend silkscreened in RED, provides the 6" high by 3/4" stroke EXIT or STAIRS letters with even illumination and no visible LEDs or hot spots. AC-Only models shall be 120/277VAC, 60Hz, with a power consumption of less than 2.5W. AC/DC models shall be 120/277VAC, 60Hz, with a power consumption of less than 2.5W and allows for DC operation from 6VDC to 24VDC, drawing less than 2.5W. Self-Powered models shall be 120/277VAC, 60Hz, with a power consumption of less than 3.5W and supplied with a sealed maintenance-free Nickel-Cadmium battery, providing at least 90 minutes illumination upon AC failure. When specified, the Self-Powered Exit Sign with Improved Diagnostics shall include a self-test and silent diagnostic function, managed by a micro-controller; it shall execute automatic tests for one minute every 30 days, 30 minutes every 60 days and 2 hours annually. A diagnostic circuit shall continuously monitor the performance of the battery, charger module and LED lamps. When a fault is detected the pilot light shall change color from green to red and flash with a specific code. The red light is steady-on in case of a battery disconnect; it will flash with one blink for battery failure; two blinks for charger failure and four blinks for LED lamp failure. A label with the diagnostic legend shall be visible next to the pilot light.

The Exit Sign shall be tested by the Underwriters Laboratories and listed to UL 924 standards. Meets City of Chicago Approved, NFPA101 (Life Safety Code), NFPA 70-NEC and OSHA illumination standards. Includes a five-year full warranty.

The Exit Sign shall be **Lightalarms®** Model _____.

ARROW (CHEVRON) DESIGNATION



NOTE: Wording and chevrons not to scale. For illustration purposes only.

POWER CONSUMPTION CHART

MODEL	AC SPECS		DC SPECS	
AC-Only	120-277VAC	Less than 2.5W	-	-
AC/DC	120-277VAC	Less than 2.5W	6 to 24VDC	Less than 2.5W
Self-Powered	120/277VAC	Less than 3.5W	Nickel-Cadmium battery	2 Hours
Self-Powered diagnostic	120/277VAC	Less than 3.5W	Nickel-Cadmium battery	2 Hours



TYPE _____

CATALOG # _____

NOTES _____

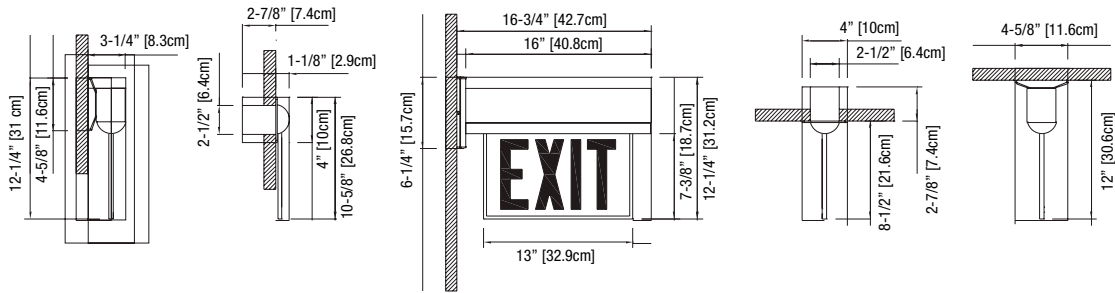
CH LED SERIES

Die-Cast Aluminum Universal Trim White
LED Edge-Lit Exit or Stairs Signage
Recessed or Surface, Ceiling,
Wall or End Mounting



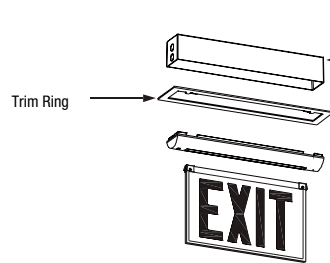
DIMENSIONS

Dimensions are approximate and subject to change.

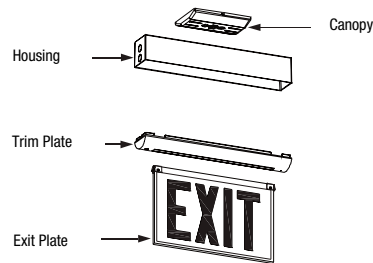


*ADD 1-1/2" TO HEIGHT OF UNIT WHEN ORDERING
PANEL WITH ARROW

RECESSED MODELS



SURFACE MODELS



ORDERING FORMAT

CUSTOM SPEC	SERIES	COLOR OF TRIM PLATE	PANEL TYPE	TRIM PLATE	LEGEND STYLE	OPTIONS
CH= City of Chicago	SLD= AC-Only SLDC= AC/DC - Remote 6-24V SLD2= AC-Dual Circuit SPLD= Self-Powered SPLDD= Self-Powered Diagnostic	A= Brushed Aluminum W= White B= Black DB= Dark Bronze (painted) PB= Polished Brass CH= Polished Chrome	Blank= Red-White Chicago legend	D= Dome P= Pyramide shape	Single Face Panels #2A= STAIRS (No Arrows) #3= EXIT (No Arrows) #5A= STAIRS (Arrow Right →) #6= EXIT (Arrow Right →) #8A= STAIRS (Arrow Left ←) #9= EXIT (Arrow Left ←) #11A= STAIRS (Double Arrows ↔) #12= EXIT (Double Arrows ↔) Double Face Panels #17A= STAIRS (No Arrows) #18= EXIT (No Arrows) #23A= STAIRS (Double Arrows ↔) #24= EXIT (Double Arrows ↔) #20A= STAIRS (Arrow Left ← and Arrow Right →, one arrow on each side) #21= EXIT (Arrow Left ← and Arrow Right →, one arrow on each side)	DL= Damp Locations Housing shipped Less Panel LP= Less Panel, (shipped separately)

EXAMPLE: CHSLD2AD#2A