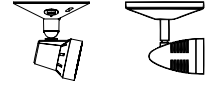
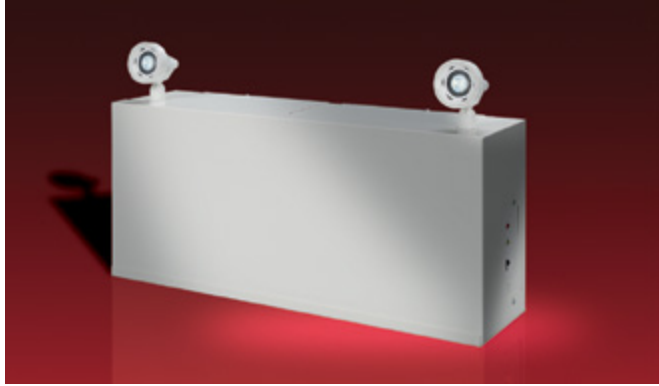


S12E & S24E Series

Steel housing 12V up to 400W & 24V-400W capacities Lead-Calcium battery



Available Head Style Choices: ELF3 DR130
Head Style Suffix: /ELF3 /DR130

Housing

- Steel housing
- Standard mist white finish, optional black finish
- Choice of 12 volt MR16 LED lamp wattages
- Heads available in Thermoplastic or decorative die-cast aluminum

Mounting

- Wall Mount
- Universal J-Box mounting

Electronics

- Pulse plus charger
- Low voltage disconnect
- Automatic brownout protection
- Battery lock-out
- Fused output circuit
- Optional: Improved Diagnostics
- Optional: Nexus® monitoring system
- 120/277 60Hz

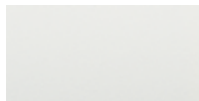
Photometric performance

Lamp	Spacing center-to-center (feet)	
	7 feet mounting height	15 feet mounting height
LD1	43'	36'
LD7	55'	43'
LD9	71'	56'
LD10	100'	85'

Housing color



Black



Mist White



Gray

Choice of Sealed Maintenance-Free Battery

6V or 12V Nickel-Cadmium battery

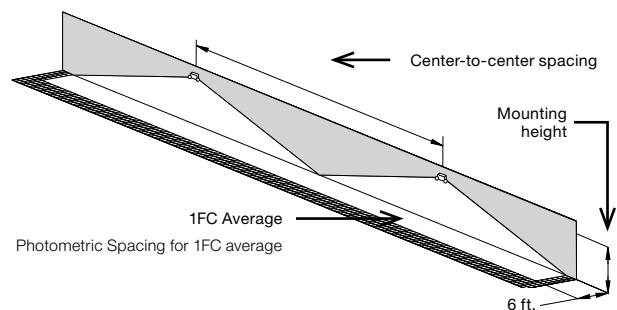
Approvals

- UL 924 Standard
- New York City Approved

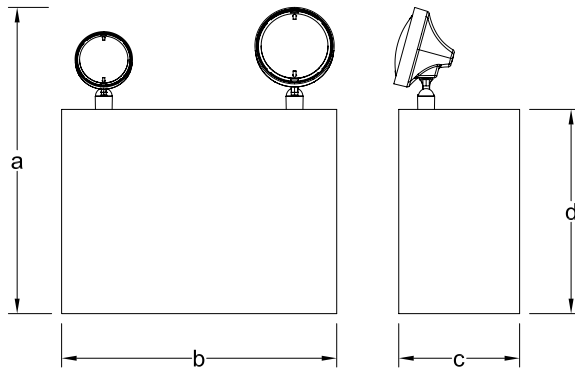
Warranty (subject to proper installation and maintenance)

Unit: three-year full warranty

Detailed warranty terms located on [page 182](#) or online at: www.lightalarms.com



Dimensions (Dimensions are approximate and subject to change)



Cabinet dimensions

Cabinet	Dimensions			
	a	b	c	d
C	18-3/8" (46.67cm)	16-1/2" (41.91cm)	7-1/4" (18.41cm)	12-1/4" (32.38cm)
D	18-3/8" (46.67cm)	27" (68.58cm)	7-1/4" (18.41cm)	12-1/4" (32.38cm)

200W unit use C Cabinet dimensions
300W and 400W unit use D Cabinet dimensions

Power consumption chart

Series	Battery	Voltage	DC Specs				AC Specs	
			Battery capacity (in watts)				Units dual voltage ¹	Current Maximum
			90 Mins	2 Hrs	3 Hrs	4 Hrs		
S12E4	Lead-Calcium	12V	200	150	107	120VAC 277VAC	0.3A 0.15A	
S1245		12V	300	225	165			127
S12E6		12V	400	300	214			170
S24E4		12V	400	300	120			60

¹ All units 120/277 dual voltage, information based on wiring to specific voltage type

Accessories (Order as a separate item)

Description	Product code
Wire guard (S12E4)	WG3-L
Wire guard (S12E5/S12E6/S24E4)	WG4-L
Mounting platform (S12E4)	MP-A
Mounting platform (S12E5/S12E6/S24E4)	MD-12
Mounting bracket (S12E4/S24E4)	MB-A

Ordering format

Number of heads	Series/Capacity	Head style	Lamp type	Housing color	Options
0= No heads	S12E4 = 12V-200W	/ELF3 = ELF3	LD7 = 12V-4W MR16 LED	-G = Gray	Blank = No Options
1= One head	S12E5 = 12V-300W	(MR16, Plastic)	LD9 = 12V-5W MR16 LED	-M = Mist white	-ID = Improved Diagnostics (audible) ^{1,3}
2= Two heads	S12E6 = 12V-400W	/DR130 = DR130	LD10 = 12V-6W MR16 LED	-B = Black	-IDNA = Improved Diagnostics (non audible) ^{1,3}
3= Three heads	S24E4 = 24V-400W	(MR16, Metal)	LD13 = 24V-4W MR16 LED LD14 = 24V-6W MR16 LED		-NEX = Nexus® Wired (contact your sales representative) ³ -NEXRF = Nexus® Wireless (contact your sales representative) ³ -T3 = Time delay (15 minute) -DS = Lamp disconnect switch -VS = Vandal-resistant screws -3CP = 120V Cord & plug, 3 wire, 3ft long ²

Example: 2S12E4/ELF3LD7-G

¹ -ID & -IDNA include a time delay feature that can be enabled/disabled in the field or set by the factory by including -ID-TD* or -IDNA-TD*

² -3CP custom length available. Consult your sales representative

³ Minimum lamp load required: 20% of unit capacity